

// 7,589 SF Office & Retail Space

# FOR SALE

Units 11 & 12 – 7228 Progress Way, Delta



**Reid Addison** Associate  
604.697.3058 | [raddison@cdnglobal.com](mailto:raddison@cdnglobal.com)

**Ryan Caulfield CPA, CGA** Principal | Vice President  
Personal Real Estate Corporation  
604.340.1101 | [rcaulfield@cdnglobal.com](mailto:rcaulfield@cdnglobal.com)

[www.cdnglobal.com](http://www.cdnglobal.com)

**CDNGLOBAL**<sup>®</sup>  
Commercial Real Estate Advisors

# PROPERTY DETAILS



## OPPORTUNITY

This rare office/retail unit in **Tilbury Industrial Park** offers a functional layout with exceptional versatility for a variety of businesses.

Featuring two floors of fully finished office space and a dedicated showroom, it's an ideal opportunity for any industrial service business.

With outstanding visibility and accessibility in one of the most central industrial hubs in the lower mainland, this prime location is perfect for establishing or expanding your operations.

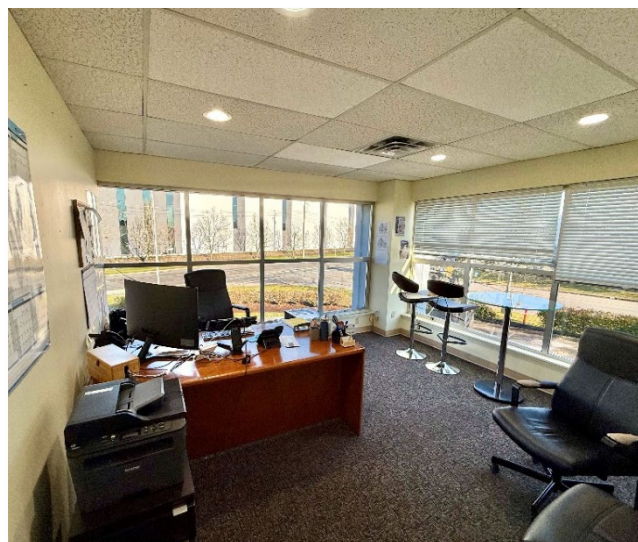
<b>Address</b>	Units 11 & 12 – 7228 Progress Way, Delta BC	
<b>Area</b>	Ground Floor	3,787 sf
	Second Floor	3,802 sf
	<b>Total</b>	<b>7,589 sf</b>
<b>Parking</b>	8 Parking Stalls	
<b>Year Built</b>	1990	
<b>Asking Price</b>	Contact Listing Brokers	
<b>Zoning</b>	<b>I2 – Medium Impact Industrial Zoning</b> provides opportunity for light and medium industrial uses, as well as office uses and retail opportunities.	



# BUILDING FEATURES & ZONING

## FEATURES

- Prominent corner location fronting Venture Street & Progress Way
- Tilt up concrete construction
- The current layout contains a fully finished second floor office, fully finished ground floor office, and ground floor showroom
- Potential for one existing tenant as well as leaseback to vendor
- 200A 3-phase power capabilities
- HVAC throughout
- Boardroom, kitchenette, and multiple private offices
- Men's and women's washrooms





# LOCATION

**7228 Progress Way** is strategically positioned at the prominent corner of Venture Street and Progress Way. Boasting excellent street exposure, this location ensures maximum visibility for your business. With quick access to Highways 99 and 91 via River Road, the property is ideally situated for seamless connectivity across the Lower Mainland. Whether servicing Vancouver, the Fraser Valley, or the U.S. border, this central location offers unmatched convenience for logistics, distribution, and operations.



This communication is intended for general information only and not to be relied upon in any way. Consequently no responsibility or liability whatsoever can be accepted by CDNGLOBAL for any loss or damage resulting from any use of, reliance on or reference to the contents of this document, including hypertext links to external sources. In addition, as a general communication, this material does not necessarily represent the view of CDNGLOBAL in relation to particular properties or projects. This communication is not intended to cause or induce breach of any agency agreement. Reproduction or Distribution of this communication in whole or in part is not allowed without prior written approval of CDNGLOBAL.

**Reid Addison** Associate

604.697.3058 | [raddison@cdnglobal.com](mailto:raddison@cdnglobal.com)

**Ryan Caulfield CPA, CGA** Principal | Vice President

Personal Real Estate Corporation 604.340.1101 | [rcaulfield@cdnglobal.com](mailto:rcaulfield@cdnglobal.com)

**CDNGLOBAL**<sup>®</sup>  
Commercial Real Estate Advisors